



مؤسسة جلو العربية للمقاولات  
GLOW ARABIA CONTRACTING EST.

# COMPANY PROFILE



We make it happen

# About Us

Established in 2020, Glow Arabia Contracting is a major conglomerate of over 10 companies with a major feat in Civil Engineering, Mechanical Engineering, and Electrical Engineering. Glow Arabia is a leading general contractor and a cornerstone of development in the state of Saudi Arabia.

At Glow Arabia Contracting, the management team is backed by an international workforce pursuing the best industry practices and using state-of-the-art equipment. Glow Arabia Contracting has been a consistent player in the nation's extraordinary growth as one of the general contractors in Saudi Arabia.





## OUR MISSION

Globally, Saudi Arabia is officially an emerging market, and its expansion as a diplomatic and travel hub is soaring. The Saudi Arabia National Vision 2030 supports strong public policy toward diversifying the national economy away from the dependence on oil and gas exports; Glow Arabia Contracting endorses the vision with uncompromised commitment.

Glow Arabia Contracting is in accordance with the growing demand in Saudi Arabia's infrastructure and development by investing in resources to meet international standards



## WHAT WE OFFER

Glow Arabia Contracting provides the finest Engineering services in Saudi Arabia.

- **Mechanical Engineering**
- **Civil Engineering**
- **Electrical Engineering**

We are committed to building long-term relationships based on integrity, performance, value, and client satisfaction. We will continue to meet the changing needs of our clients with our quality services delivered by the most qualified people on time



## CIVIL WORKS

We are one of the leading contractors for civil engineering within Saudi Arabia and currently working on several of Saudi Arabia's infrastructure projects.

From encompassing major highways and bridges, and railway communication networks, to sewage and pedestrian walkways, Civil Construction lays the foundations for humans to get about their daily lives while also supporting the economy.







## HEAVY INDUSTRIAL

Over the years the missionary goal and focus of the management, Glow Arabia Contracting is known for its merits and superior quality in Heavy Industrial works like mining, steel production, skyscrapers, oil, and gas.

Excellent financial resources combined with the most dedicated workforce, technocrats, and technicians with utmost importance for quality and safety have ensured a higher productive and qualitative rate. As a leading general contractor, we look forward to the new and emerging developments in Saudi Arabia with the passion to work for the land where we were born.

Our infrastructure is catered to meet the needs of heavy engineering industries like cement, power, and process industries.

## PIPE LINE CIVIL WORKS

Glow Arabia Contracting also introduces itself as one of the companies in the field of Oil & Gas Pipeline Projects, Development of City Gas Distribution Networks, Plant Piping, Water Pipelines, and Civil & Structural Work. Our expertise in the pipeline works in the most difficult environmental and logistical conditions, such as deserts, mountains, forests, jungles, swamps, etc with a large, modern, and specialised construction equipment fleet that allows us to execute every type of oil & gas pipeline construction.







## ALL TYPES OF HEAVY FOUNDATION & STRUCTURAL WORKS

Glow Arabia Contracting delivers expert structural services to prepare a new build for the building and the basis of the construction. We prepare and excavate the land by the most efficient means possible, using a combination of manpower and highly technical heavy-duty vehicles.

Weak, compressible soils may require structural elements, specifically heavy foundations, that transfer loads through to underlying competent soils or rock. Whether an open site or inside an existing structure, Glow Arabia Contracting provides the optimal heavy foundation solution for your project. This solution is also used when tensile forces need to be transferred to the ground.



## CIVIL SHORING WORKS

Glow Arabia Contracting offers world-class solutions for shore civil work which features a form of prop or support, usually temporary, that is used during the repair or original construction of buildings and in excavations. We deliver and meet the key requirements in terms of product performance and aesthetics, sustainable construction, ease of use, and productivity across a variety of applications in the construction industry.





# OUR PROJECTS







## LARGE EXCAVATION WORK

Because we can fully self-deliver, you can be assured that when you hire our services, no matter how large your project, we can scale our teams and plant machinery to meet your exact needs from large excavations, deep bulk excavations, cutting and filling, re-engineering and stabilising fills, etc.



## HIGH-VOLUME BACKFILLING WORKS

Excavation and backfilling of soil is a very important part of the construction process, and care must be taken while excavating from a safety perspective. Different soil layers may be encountered while excavation and dewatering may be needed sometimes. Formula Arabia Contracting understands and undertakes correct measurement of excavation and backfilling is required because excavation cost is a major part of the foundation construction.





# BUILDING

For both residential and non-residential projects, Glow Arabia Contracting is always looking to progress in terms of durability, innovation, safety, and sustainability. We offer our customers four lasting benefits: sustainable construction, protection and robustness, aesthetics, and productivity.

Building chemistry requires a combination of innovation, consistency, colour, and reactivity. Our years of working closely with building contractors and engineers allowed us to gain an in-depth understanding of our customers' needs. Whether this is through partnered product development at one of our technology centres or through onsite guidance, our wide-reaching expertise is invaluable.







# REINFORCED CONCRETE

At Glow Arabia Contracting, we have extensive in-house experience in all forms of reinforced concrete construction. Since our inception, we have completed a wide range of reinforced concrete structures in the role of both Principal Contractor and Sub Contractor.







## **PRECAST & STEEL STRUCTURE**

Glow Arabia Contracting also offers high-quality precast concrete along with steel structures like compound walls, paver blocks, bench slabs, curb stones, hollow blocks, etc.

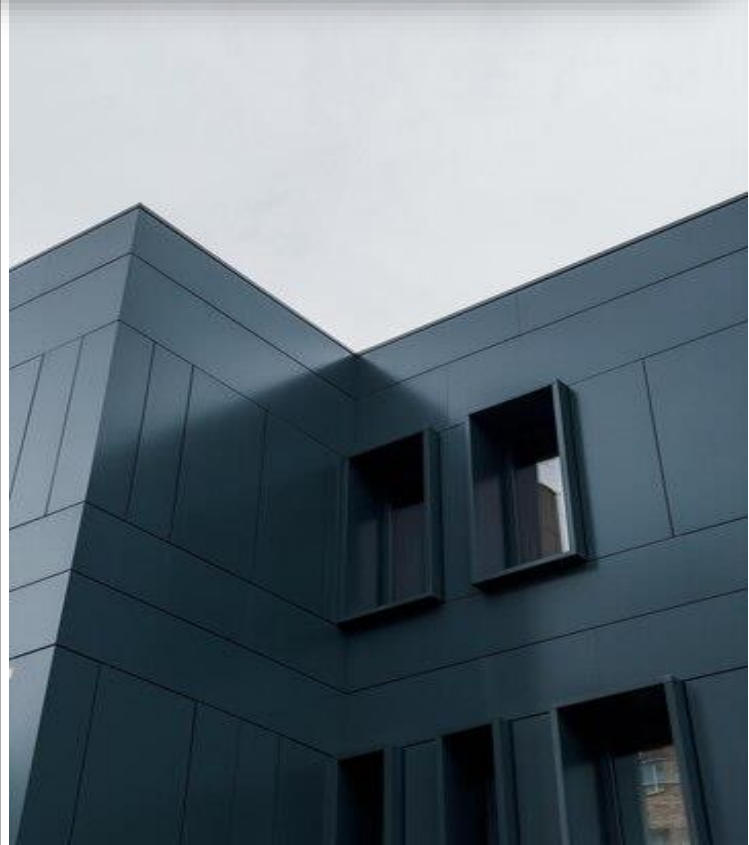






## CLADDING WORKS

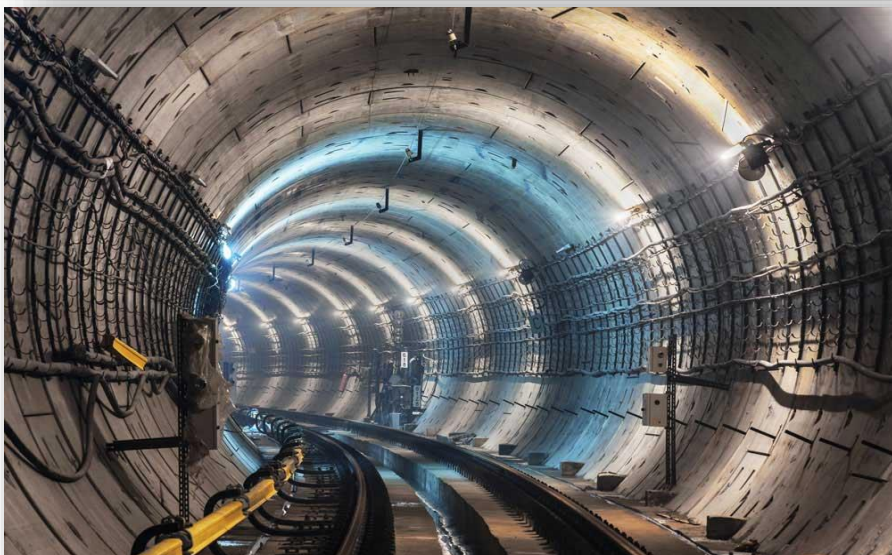
Cladding works and solutions are offered by Glow Arabia Contracting with a wide range of types designed to provide desired aesthetic elevation which helps in enhancing the look of the building and meet the demands of external cladding of infrastructures.





# INFRASTRUCTURES

Infrastructure projects take time, and time takes foresight. That's why, when it comes to infrastructure & utility solutions, Glow Arabia Contracting takes a project-based approach in order to best leverage our wide range of specialty products with our unrivalled expertise. We dive deep into your needs to provide long-lasting solutions that are right for you! With a vision for the development of Saudi Arabia, our esteemed workforce works closely with applicators on the ground for delivery, training, correct use, and application, to ensure rapidity, ease of use, safety, sustainability, and longevity of the project.







## MECHANICAL

Glow Arabia Contracting has a major hand in Mechanical Engineering and is committed to manufacturing quality products in the field of Mechanical Engineering for use in industrial controls, measurement systems, and laboratories along with Electrical Engineering.

To our customers, we offer not only quality products but comprehensive application design services and other services to meaningfully reduce the cost of ownership of our equipment.





## SITE FACILITIES

A construction site often starts with breaking ground and preparing an area to quickly build a small 'construction village' that has its own - temporary - infrastructure. You need to allow for a variety of factors, such as the type of construction project, location and environment, materials to be used, required utilities, legislation, and, of course, building site safety. Each of these factors can cause standstills. Every building site is unique.

Glow Arabia Contracting takes pride in providing state-of-the-art site facilities with every checklist of humanity. For example, fencing to keep out loiterers, the laying of a sewer, materials security, and terrain lighting. Toilets and site huts are also indispensable for creating a decent work environment. Lifts and cranes are also indispensable during the workday.



## Facilities for Construction Labourers on Site





## TEMPORARY & PERMANENT CAMP, OFFICES, WAREHOUSE,

Glow Arabia Contracting leverages the total approach to support projects by building utilities in the engineering industry. It includes warehouses, workshop facilities, temporary and/or permanent camps, etc. Our specialised skills and proven experience in energy plant design, technology, and innovative construction practices deliver safe, reliable, and affordable facilities to projects.







## **WORKSHOP & LAY DOWN YARDS**

Glow Arabia Contracting provides areas for workshop and lay down yards to serve the customer as well as project requirements ranging from yards for material filling, and warehouse management to workshops for the execution of the project.







# Professional Electrical Services

Glow Arabia Contracting aims to be safe, reliable, sustainable, and the best electrical service provide across Saudi Arabia. We provide active leadership and technical support to achieve high-quality standards of Electrical Engineering and Management with the following services:

## our services

- Panel board erecting
- Switch Gear
- Heavy Electrical industrial System
- Underground Cabling



# Clients



Tabuk Cement Company





# Legal Documents and Approvals

٧٠٤١٣٢٠١٢٣  
رقم المودع :  
٤٧٠٠١٢٣٢٢٣  
رقم المنشأة :  
١٤٤٦/٠٢/٠٨  
التاريخ :

شهادة تسجيل فرع مؤسسة فردية  
Branch Of Individual Establishment Registration Certificate

وزارة التجارة  
Ministry of Commerce

إسم التاجر: عبدالواحد عبدالهادي ابراهيم الحمدي  
رقم السجل المدني/ بطاقة الأحوال: ١٠٦٨٥٢٦٤٢٣  
مركزها الرئيسي : ينبع  
هاتف :  
الرمز البريدي : ٤٦٤٣٦  
ص. ب. :  
رقم سجل المركز الرئيسي: ٤٧٠٠١٠٧٠٢٣  
مؤسسة جلو العربية للمقاولات  
الإسم التجاري للفرع:  
العنوان : ٢٧١٦، طريق الملك عبدالعزيز، ٧٢٢٤  
هاتف :  
الرمز البريدي : ٤٦٤٣٦  
ص. ب. :  
النشاط : للاطلاع على بيانات الأنشطة الرجاء مسح الرمز التجاري  
رأس المال : ٢٠٠٠٠  
عشرون ألف ريال فقط لا غير  
إسم المدير أو الوكيل المفوض : عبدالواحد عبدالهادي ابراهيم الحمدي  
الجنسية : سعودي  
رقم السجل المدني - الإقامة: ١٠٦٨٥٢٦٤٢٣  
تاريخه :  
مصدره :  
سلطات المدير :  
يشهد مكتب السجل التجاري بمدينة : ينبع  
بأنه تم تسجيل فرع المؤسسة المذكورة أعلاه بمدينة : ينبع  
١٤٤٦/٠٢/٠٨  
٢٤٠٨١٢٩٨٦٨٤٠  
١٤٤٦/٠٢/٠٨  
وتنتهي صلاحية الشهادات في : ١٤٤٧/٠٢/١٨  
بموجب الإيصال رقم :  
٢٤٠٨١٢٩٨٦٨٤٠  
١٤٤٦/٠٢/٠٨  
وتاريخ :

١٤٤٧  
١٤٤٦  
١٤٤٥  
١٤٤٤  
١٤٤٣  
١٤٤٢  
١٤٤١  
١٤٤٠  
١٤٣٩  
١٤٣٨  
١٤٣٧  
١٤٣٦  
١٤٣٥  
١٤٣٤  
١٤٣٣  
١٤٣٢  
١٤٣١  
١٤٣٠  
١٤٢٩  
١٤٢٨  
١٤٢٧  
١٤٢٦  
١٤٢٥  
١٤٢٤  
١٤٢٣  
١٤٢٢  
١٤٢١  
١٤٢٠  
١٤١٩  
١٤١٨  
١٤١٧  
١٤١٦  
١٤١٥  
١٤١٤  
١٤١٣  
١٤١٢  
١٤١١  
١٤١٠  
١٤٠٩  
١٤٠٨  
١٤٠٧  
١٤٠٦  
١٤٠٥  
١٤٠٤  
١٤٠٣  
١٤٠٢  
١٤٠١  
١٤٠٠  
١٣٩٩  
١٣٩٨  
١٣٩٧  
١٣٩٦  
١٣٩٥  
١٣٩٤  
١٣٩٣  
١٣٩٢  
١٣٩١  
١٣٩٠  
١٣٨٩  
١٣٨٨  
١٣٨٧  
١٣٨٦  
١٣٨٥  
١٣٨٤  
١٣٨٣  
١٣٨٢  
١٣٨١  
١٣٨٠  
١٣٧٩  
١٣٧٨  
١٣٧٧  
١٣٧٦  
١٣٧٥  
١٣٧٤  
١٣٧٣  
١٣٧٢  
١٣٧١  
١٣٧٠  
١٣٦٩  
١٣٦٨  
١٣٦٧  
١٣٦٦  
١٣٦٥  
١٣٦٤  
١٣٦٣  
١٣٦٢  
١٣٦١  
١٣٦٠  
١٣٥٩  
١٣٥٨  
١٣٥٧  
١٣٥٦  
١٣٥٥  
١٣٥٤  
١٣٥٣  
١٣٥٢  
١٣٥١  
١٣٥٠  
١٣٤٩  
١٣٤٨  
١٣٤٧  
١٣٤٦  
١٣٤٥  
١٣٤٤  
١٣٤٣  
١٣٤٢  
١٣٤١  
١٣٤٠  
١٣٣٩  
١٣٣٨  
١٣٣٧  
١٣٣٦  
١٣٣٥  
١٣٣٤  
١٣٣٣  
١٣٣٢  
١٣٣١  
١٣٣٠  
١٣٢٩  
١٣٢٨  
١٣٢٧  
١٣٢٦  
١٣٢٥  
١٣٢٤  
١٣٢٣  
١٣٢٢  
١٣٢١  
١٣٢٠  
١٣١٩  
١٣١٨  
١٣١٧  
١٣١٦  
١٣١٥  
١٣١٤  
١٣١٣  
١٣١٢  
١٣١١  
١٣١٠  
١٣٠٩  
١٣٠٨  
١٣٠٧  
١٣٠٦  
١٣٠٥  
١٣٠٤  
١٣٠٣  
١٣٠٢  
١٣٠١  
١٣٠٠  
١٢٩٩  
١٢٩٨  
١٢٩٧  
١٢٩٦  
١٢٩٥  
١٢٩٤  
١٢٩٣  
١٢٩٢  
١٢٩١  
١٢٩٠  
١٢٨٩  
١٢٨٨  
١٢٨٧  
١٢٨٦  
١٢٨٥  
١٢٨٤  
١٢٨٣  
١٢٨٢  
١٢٨١  
١٢٨٠  
١٢٧٩  
١٢٧٨  
١٢٧٧  
١٢٧٦  
١٢٧٥  
١٢٧٤  
١٢٧٣  
١٢٧٢  
١٢٧١  
١٢٧٠  
١٢٦٩  
١٢٦٨  
١٢٦٧  
١٢٦٦  
١٢٦٥  
١٢٦٤  
١٢٦٣  
١٢٦٢  
١٢٦١  
١٢٦٠  
١٢٥٩  
١٢٥٨  
١٢٥٧  
١٢٥٦  
١٢٥٥  
١٢٥٤  
١٢٥٣  
١٢٥٢  
١٢٥١  
١٢٥٠  
١٢٤٩  
١٢٤٨  
١٢٤٧  
١٢٤٦  
١٢٤٥  
١٢٤٤  
١٢٤٣  
١٢٤٢  
١٢٤١  
١٢٤٠  
١٢٣٩  
١٢٣٨  
١٢٣٧  
١٢٣٦  
١٢٣٥  
١٢٣٤  
١٢٣٣  
١٢٣٢  
١٢٣١  
١٢٣٠  
١٢٢٩  
١٢٢٨  
١٢٢٧  
١٢٢٦  
١٢٢٥  
١٢٢٤  
١٢٢٣  
١٢٢٢  
١٢٢١  
١٢٢٠  
١٢١٩  
١٢١٨  
١٢١٧  
١٢١٦  
١٢١٥  
١٢١٤  
١٢١٣  
١٢١٢  
١٢١١  
١٢١٠  
١٢٠٩  
١٢٠٨  
١٢٠٧  
١٢٠٦  
١٢٠٥  
١٢٠٤  
١٢٠٣  
١٢٠٢  
١٢٠١  
١٢٠٠  
١١٩٩  
١١٩٨  
١١٩٧  
١١٩٦  
١١٩٥  
١١٩٤  
١١٩٣  
١١٩٢  
١١٩١  
١١٩٠  
١١٨٩  
١١٨٨  
١١٨٧  
١١٨٦  
١١٨٥  
١١٨٤  
١١٨٣  
١١٨٢  
١١٨١  
١١٨٠  
١١٧٩  
١١٧٨  
١١٧٧  
١١٧٦  
١١٧٥  
١١٧٤  
١١٧٣  
١١٧٢  
١١٧١  
١١٧٠  
١١٦٩  
١١٦٨  
١١٦٧  
١١٦٦  
١١٦٥  
١١٦٤  
١١٦٣  
١١٦٢  
١١٦١  
١١٦٠  
١١٥٩  
١١٥٨  
١١٥٧  
١١٥٦  
١١٥٥  
١١٥٤  
١١٥٣  
١١٥٢  
١١٥١  
١١٥٠  
١١٤٩  
١١٤٨  
١١٤٧  
١١٤٦  
١١٤٥  
١١٤٤  
١١٤٣  
١١٤٢  
١١٤١  
١١٤٠  
١١٣٩  
١١٣٨  
١١٣٧  
١١٣٦  
١١٣٥  
١١٣٤  
١١٣٣  
١١٣٢  
١١٣١  
١١٣٠  
١١٢٩  
١١٢٨  
١١٢٧  
١١٢٦  
١١٢٥  
١١٢٤  
١١٢٣  
١١٢٢  
١١٢١  
١١٢٠  
١١١٩  
١١١٨  
١١١٧  
١١١٦  
١١١٥  
١١١٤  
١١١٣  
١١١٢  
١١١١  
١١١٠  
١١٠٩  
١١٠٨  
١١٠٧  
١١٠٦  
١١٠٥  
١١٠٤  
١١٠٣  
١١٠٢  
١١٠١  
١١٠٠  
١٠٩٩  
١٠٩٨  
١٠٩٧  
١٠٩٦  
١٠٩٥  
١٠٩٤  
١٠٩٣  
١٠٩٢  
١٠٩١  
١٠٩٠  
١٠٨٩  
١٠٨٨  
١٠٨٧  
١٠٨٦  
١٠٨٥  
١٠٨٤  
١٠٨٣  
١٠٨٢  
١٠٨١  
١٠٨٠  
١٠٧٩  
١٠٧٨  
١٠٧٧  
١٠٧٦  
١٠٧٥  
١٠٧٤  
١٠٧٣  
١٠٧٢  
١٠٧١  
١٠٧٠  
١٠٦٩  
١٠٦٨  
١٠٦٧  
١٠٦٦  
١٠٦٥  
١٠٦٤  
١٠٦٣  
١٠٦٢  
١٠٦١  
١٠٦٠  
١٠٥٩  
١٠٥٨  
١٠٥٧  
١٠٥٦  
١٠٥٥  
١٠٥٤  
١٠٥٣  
١٠٥٢  
١٠٥١  
١٠٥٠  
١٠٤٩  
١٠٤٨  
١٠٤٧  
١٠٤٦  
١٠٤٥  
١٠٤٤  
١٠٤٣  
١٠٤٢  
١٠٤١  
١٠٤٠  
١٠٣٩  
١٠٣٨  
١٠٣٧  
١٠٣٦  
١٠٣٥  
١٠٣٤  
١٠٣٣  
١٠٣٢  
١٠٣١  
١٠٣٠  
١٠٢٩  
١٠٢٨  
١٠٢٧  
١٠٢٦  
١٠٢٥  
١٠٢٤  
١٠٢٣  
١٠٢٢  
١٠٢١  
١٠٢٠  
١٠١٩  
١٠١٨  
١٠١٧  
١٠١٦  
١٠١٥  
١٠١٤  
١٠١٣  
١٠١٢  
١٠١١  
١٠١٠  
١٠٠٩  
١٠٠٨  
١٠٠٧  
١٠٠٦  
١٠٠٥  
١٠٠٤  
١٠٠٣  
١٠٠٢  
١٠٠١  
١٠٠٠  
٩٩٩٩  
٩٩٩٨  
٩٩٩٧  
٩٩٩٦  
٩٩٩٥  
٩٩٩٤  
٩٩٩٣  
٩٩٩٢  
٩٩٩١  
٩٩٩٠  
٩٩٨٩  
٩٩٨٨  
٩٩٨٧  
٩٩٨٦  
٩٩٨٥  
٩٩٨٤  
٩٩٨٣  
٩٩٨٢  
٩٩٨١  
٩٩٨٠  
٩٩٧٩  
٩٩٧٨  
٩٩٧٧  
٩٩٧٦  
٩٩٧٥  
٩٩٧٤  
٩٩٧٣  
٩٩٧٢  
٩٩٧١  
٩٩٧٠  
٩٩٦٩  
٩٩٦٨  
٩٩٦٧  
٩٩٦٦  
٩٩٦٥  
٩٩٦٤  
٩٩٦٣  
٩٩٦٢  
٩٩٦١  
٩٩٦٠  
٩٩٥٩  
٩٩٥٨  
٩٩٥٧  
٩٩٥٦  
٩٩٥٥  
٩٩٥٤  
٩٩٥٣  
٩٩٥٢  
٩٩٥١  
٩٩٥٠  
٩٩٤٩  
٩٩٤٨  
٩٩٤٧  
٩٩٤٦  
٩٩٤٥  
٩٩٤٤  
٩٩٤٣  
٩٩٤٢  
٩٩٤١  
٩٩٤٠  
٩٩٣٩  
٩٩٣٨  
٩٩٣٧  
٩٩٣٦  
٩٩٣٥  
٩٩٣٤  
٩٩٣٣  
٩٩٣٢  
٩٩٣١  
٩٩٣٠  
٩٩٢٩  
٩٩٢٨  
٩٩٢٧  
٩٩٢٦  
٩٩٢٥  
٩٩٢٤  
٩٩٢٣  
٩٩٢٢  
٩٩٢١  
٩٩٢٠  
٩٩١٩  
٩٩١٨  
٩٩١٧  
٩٩١٦  
٩٩١٥  
٩٩١٤  
٩٩١٣  
٩٩١٢  
٩٩١١  
٩٩١٠  
٩٩٠٩  
٩٩٠٨  
٩٩٠٧  
٩٩٠٦  
٩٩٠٥  
٩٩٠٤  
٩٩٠٣  
٩٩٠٢  
٩٩٠١  
٩٩٠٠  
٩٨٩٩  
٩٨٩٨  
٩٨٩٧  
٩٨٩٦  
٩٨٩٥  
٩٨٩٤  
٩٨٩٣  
٩٨٩٢  
٩٨٩١  
٩٨٩٠  
٩٨٨٩  
٩٨٨٨  
٩٨٨٧  
٩٨٨٦  
٩٨٨٥  
٩٨٨٤  
٩٨٨٣  
٩٨٨٢  
٩٨٨١  
٩٨٨٠  
٩٨٧٩  
٩٨٧٨  
٩٨٧٧  
٩٨٧٦  
٩٨٧٥  
٩٨٧٤  
٩٨٧٣  
٩٨٧٢  
٩٨٧١  
٩٨٧٠  
٩٨٦٩  
٩٨٦٨  
٩٨٦٧  
٩٨٦٦  
٩٨٦٥  
٩٨٦٤  
٩٨٦٣  
٩٨٦٢  
٩٨٦١  
٩٨٦٠  
٩٨٥٩  
٩٨٥٨  
٩٨٥٧  
٩٨٥٦  
٩٨٥٥  
٩٨٥٤  
٩٨٥٣  
٩٨٥٢  
٩٨٥١  
٩٨٥٠  
٩٨٤٩  
٩٨٤٨  
٩٨٤٧  
٩٨٤٦  
٩٨٤٥  
٩٨٤٤  
٩٨٤٣  
٩٨٤٢  
٩٨٤١  
٩٨٤٠  
٩٨٣٩  
٩٨٣٨  
٩٨٣٧  
٩٨٣٦  
٩٨٣٥  
٩٨٣٤  
٩٨٣٣  
٩٨٣٢  
٩٨٣١  
٩٨٣٠  
٩٨٢٩  
٩٨٢٨  
٩٨٢٧  
٩٨٢٦  
٩٨٢٥  
٩٨٢٤  
٩٨٢٣  
٩٨٢٢  
٩٨٢١  
٩٨٢٠  
٩٨١٩  
٩٨١٨  
٩٨١٧  
٩٨١٦  
٩٨١٥  
٩٨١٤  
٩٨١٣  
٩٨١٢  
٩٨١١  
٩٨١٠  
٩٨٠٩  
٩٨٠٨  
٩٨٠٧  
٩٨٠٦  
٩٨٠٥  
٩٨٠٤  
٩٨٠٣  
٩٨٠٢  
٩٨٠١  
٩٨٠٠  
٩٧٩٩  
٩٧٩٨  
٩٧٩٧  
٩٧٩٦  
٩٧٩٥  
٩٧٩٤  
٩٧٩٣  
٩٧٩٢  
٩٧٩١  
٩٧٩٠  
٩٧٨٩  
٩٧٨٨  
٩٧٨٧  
٩٧٨٦  
٩٧٨٥  
٩٧٨٤  
٩٧٨٣  
٩٧٨٢  
٩٧٨١  
٩٧٨٠  
٩٧٧٩  
٩٧٧٨  
٩٧٧٧  
٩٧٧٦  
٩٧٧٥  
٩٧٧٤  
٩٧٧٣  
٩٧٧٢  
٩٧٧١  
٩٧٧٠  
٩٧٦٩  
٩٧٦٨  
٩٧٦٧  
٩٧٦٦  
٩٧٦٥  
٩٧٦٤  
٩٧٦٣  
٩٧٦٢  
٩٧٦١  
٩٧٦٠  
٩٧٥٩  
٩٧٥٨  
٩٧٥٧  
٩٧٥٦  
٩٧٥٥  
٩٧٥٤  
٩٧٥٣  
٩٧٥٢  
٩٧٥١  
٩٧٥٠  
٩٧٤٩  
٩٧٤٨  
٩٧٤٧  
٩٧٤٦  
٩٧٤٥  
٩٧٤٤  
٩٧٤٣  
٩٧٤٢  
٩٧٤١  
٩٧٤٠  
٩٧٣٩  
٩٧٣٨  
٩٧٣٧  
٩٧٣٦  
٩٧٣٥  
٩٧٣٤  
٩٧٣٣  
٩٧٣٢  
٩٧٣١  
٩٧٣٠  
٩٧٢٩  
٩٧٢٨  
٩٧٢٧  
٩٧٢٦  
٩٧٢٥  
٩٧٢٤  
٩٧٢٣  
٩٧٢٢  
٩٧٢١  
٩٧٢٠  
٩٧١٩  
٩٧١٨  
٩٧١٧  
٩٧١٦  
٩٧١٥  
٩٧١٤  
٩٧١٣  
٩٧١٢  
٩٧١١  
٩٧١٠  
٩٧٠٩  
٩٧٠٨  
٩٧٠٧  
٩٧٠٦  
٩٧٠٥  
٩٧٠٤  
٩٧٠٣  
٩٧٠٢  
٩٧٠١  
٩٧٠٠  
٩٦٩٩  
٩٦٩٨  
٩٦٩٧  
٩٦٩٦  
٩٦٩٥  
٩٦٩٤  
٩٦٩٣  
٩٦٩٢  
٩٦٩١  
٩٦٩٠  
٩٦٨٩  
٩٦٨٨  
٩٦٨٧  
٩٦٨٦  
٩٦٨٥  
٩٦٨٤  
٩٦٨٣  
٩٦٨٢  
٩٦٨١  
٩٦٨٠  
٩٦٧٩  
٩٦٧٨  
٩٦٧٧  
٩٦٧٦  
٩٦٧٥  
٩٦٧٤  
٩٦٧٣  
٩٦٧٢  
٩٦٧١  
٩٦٧٠  
٩٦٦٩  
٩٦٦٨  
٩٦٦٧  
٩٦٦٦  
٩٦٦٥  
٩٦٦٤  
٩٦٦٣  
٩٦٦٢  
٩٦٦١  
٩٦٦٠  
٩٦٥٩  
٩٦٥٨  
٩٦٥٧  
٩٦٥٦  
٩٦٥٥  
٩٦٥٤  
٩٦٥٣  
٩٦٥٢  
٩٦٥١  
٩٦٥٠  
٩٦٤٩  
٩٦٤٨  
٩٦٤٧  
٩٦٤٦  
٩٦٤٥  
٩٦٤٤  
٩٦٤٣  
٩٦٤٢  
٩٦٤١  
٩٦٤٠  
٩٦٣٩  
٩٦٣٨  
٩٦٣٧  
٩٦٣٦  
٩٦٣٥  
٩٦٣٤  
٩٦٣٣  
٩٦٣٢  
٩٦٣١  
٩٦٣٠  
٩٦٢٩  
٩٦٢٨  
٩٦٢٧  
٩٦٢٦  
٩٦٢٥  
٩٦٢٤  
٩٦٢٣  
٩٦٢٢  
٩٦٢١  
٩٦٢٠  
٩٦١٩  
٩٦١٨  
٩٦١٧  
٩٦١٦  
٩٦١٥  
٩٦١٤  
٩٦١٣  
٩٦١٢  
٩٦١١  
٩٦١٠  
٩٦٠٩  
٩٦٠٨  
٩٦٠٧  
٩٦٠٦  
٩٦٠٥  
٩٦٠٤  
٩٦٠٣  
٩٦٠٢  
٩٦٠١  
٩٦٠٠  
٩٥٩٩  
٩٥٩٨  
٩٥٩٧  
٩٥٩٦  
٩٥٩٥  
٩٥٩٤  
٩٥٩٣  
٩٥٩٢  
٩٥٩١  
٩٥٩٠  
٩٥٨٩  
٩٥٨٨  
٩٥٨٧  
٩٥٨٦  
٩٥٨٥  
٩٥٨٤  
٩٥٨٣  
٩٥٨٢  
٩٥٨١  
٩٥٨٠  
٩٥٧٩  
٩٥٧٨  
٩٥٧٧  
٩٥٧٦  
٩٥٧٥  
٩٥٧٤  
٩٥٧٣  
٩٥٧٢  
٩٥٧١  
٩٥٧٠  
٩٥٦٩  
٩٥٦٨  
٩٥٦٧  
٩٥٦٦  
٩٥٦٥  
٩٥٦٤  
٩٥٦٣  
٩٥٦٢  
٩٥٦١  
٩٥٦٠  
٩٥٥٩  
٩٥٥٨  
٩٥٥٧  
٩٥٥٦  
٩٥٥٥  
٩٥٥٤  
٩٥٥٣  
٩٥٥٢  
٩٥٥١  
٩٥٥٠  
٩٥٤٩  
٩٥٤٨  
٩٥٤٧  
٩٥٤٦  
٩٥٤٥  
٩٥٤٤  
٩٥٤٣  
٩٥٤٢  
٩٥٤١  
٩٥٤٠  
٩٥٣٩  
٩٥٣٨  
٩٥٣٧  
٩٥٣٦  
٩٥٣٥  
٩٥٣٤  
٩٥٣٣  
٩٥٣٢  
٩٥٣١  
٩٥٣٠  
٩٥٢٩  
٩٥٢٨  
٩٥٢٧  
٩٥٢٦  
٩٥٢٥  
٩٥٢٤  
٩٥٢٣  
٩٥٢٢  
٩٥٢١  
٩٥٢٠  
٩٥١٩  
٩٥١٨  
٩٥١٧  
٩٥١٦  
٩٥١٥  
٩٥١٤  
٩٥١٣  
٩٥١٢  
٩٥١١  
٩٥١٠  
٩٥٠٩  
٩٥٠٨  
٩٥٠٧  
٩٥٠٦  
٩٥٠٥  
٩٥٠٤  
٩٥٠٣  
٩٥٠٢  
٩٥٠١  
٩٥٠٠  
٩٤٩٩  
٩٤٩٨  
٩٤٩٧  
٩٤٩٦  
٩٤٩٥  
٩٤٩٤  
٩٤٩٣  
٩٤٩٢  
٩٤٩١  
٩٤٩٠  
٩٤٨٩  
٩٤٨٨  
٩٤٨٧  
٩٤٨٦  
٩٤٨٥  
٩٤٨٤  
٩٤٨٣  
٩٤٨٢  
٩٤٨١  
٩٤٨٠  
٩٤٧٩  
٩٤٧٨  
٩٤٧٧  
٩٤٧٦  
٩٤٧٥  
٩٤٧٤  
٩٤٧٣  
٩٤٧٢  
٩٤٧١  
٩٤٧٠  
٩٤٦٩  
٩٤٦٨  
٩٤٦٧  
٩٤٦٦  
٩٤٦٥  
٩٤٦٤  
٩٤٦٣  
٩٤٦٢  
٩٤٦١  
٩٤٦٠  
٩٤٥٩  
٩٤٥٨  
٩٤٥٧  
٩٤٥٦  
٩٤٥٥  
٩٤٥٤  
٩٤٥٣  
٩٤٥٢  
٩٤٥١  
٩٤٥٠  
٩٤٤٩  
٩٤٤٨  
٩٤٤٧  
٩٤٤٦  
٩٤٤٥  
٩٤٤٤  
٩٤٤٣  
٩٤٤٢  
٩٤٤١  
٩٤٤٠  
٩٤٣٩  
٩٤٣٨  
٩٤٣٧  
٩٤٣٦  
٩٤٣٥  
٩٤٣٤  
٩٤٣٣  
٩٤٣٢  
٩٤٣١  
٩٤٣٠  
٩٤٢٩  
٩٤٢٨  
٩٤٢٧  
٩٤٢٦  
٩٤٢٥  
٩٤٢٤  
٩٤٢٣  
٩٤٢٢  
٩٤٢١  
٩٤٢٠  
٩٤١٩  
٩٤١٨  
٩٤١٧  
٩٤١٦  
٩٤١٥  
٩٤١٤  
٩٤١٣  
٩٤١٢  
٩٤١١  
٩٤١٠  
٩٤٠٩  
٩٤٠٨  
٩٤٠٧  
٩٤٠٦  
٩٤٠٥  
٩٤٠٤  
٩٤٠٣  
٩٤٠٢  
٩٤٠١  
٩٤٠٠  
٩٣٩٩  
٩٣٩٨  
٩٣٩٧  
٩٣٩٦  
٩٣٩٥  
٩٣٩٤  
٩٣٩٣  
٩٣٩٢  
٩٣٩١  
٩٣٩٠  
٩٣٨٩  
٩٣٨٨  
٩٣٨٧  
٩٣٨٦  
٩٣٨٥  
٩٣٨٤  
٩٣٨٣  
٩٣٨٢  
٩٣٨١  
٩٣٨٠  
٩٣٧٩  
٩٣٧٨  
٩٣٧٧  
٩٣٧٦  
٩٣٧٥  
٩٣٧٤  
٩٣٧٣  
٩٣٧٢  
٩٣٧١  
٩٣٧٠  
٩٣٦٩  
٩٣٦٨  
٩٣٦٧  
٩٣٦٦  
٩٣٦٥  
٩٣٦٤  
٩٣٦٣  
٩٣٦٢  
٩٣٦١  
٩٣٦٠  
٩٣٥٩  
٩٣٥٨  
٩٣٥٧  
٩٣٥٦  
٩٣٥٥  
٩٣٥٤  
٩٣٥٣  
٩٣٥٢  
٩٣٥١  
٩٣٥٠  
٩٣٤٩  
٩٣٤٨  
٩٣٤٧  
٩٣٤٦  
٩٣٤٥  
٩٣٤٤  
٩٣٤٣  
٩٣٤٢  
٩٣٤١  
٩٣٤٠  
٩٣٣٩  
٩٣٣٨  
٩٣٣٧  
٩٣٣٦  
٩٣٣٥  
٩٣٣٤  
٩٣٣٣  
٩٣٣٢  
٩٣٣١  
٩٣٣٠  
٩٣٢٩  
٩٣٢٨  
٩٣٢٧  
٩٣٢٦  
٩٣٢٥  
٩٣٢٤  
٩٣٢٣  
٩٣٢٢  
٩٣٢١  
٩٣٢٠  
٩٣١٩  
٩٣١٨  
٩٣١٧  
٩٣١٦  
٩٣١٥  
٩٣١٤  
٩٣١٣  
٩٣١٢  
٩٣١١  
٩٣١٠  
٩٣٠٩  
٩٣٠٨  
٩٣٠٧  
٩٣٠٦  
٩٣٠٥  
٩٣٠٤  
٩٣٠٣  
٩٣٠٢  
٩٣٠١  
٩٣٠٠  
٩٢٩٩  
٩٢٩٨  
٩٢٩٧  
٩٢٩٦  
٩٢٩٥  
٩٢٩٤  
٩٢٩٣  
٩٢٩٢  
٩٢٩١  
٩٢٩٠  
٩٢٨٩  
٩٢٨٨  
٩٢٨٧  
٩٢٨٦  
٩٢٨٥  
٩٢٨٤  
٩٢٨٣  
٩٢٨٢  
٩٢٨١





مؤسسة جلو العربية للمقاولات  
GLOW ARABIA CONTRACTING EST.

---

Contact :

CR: 4700123223. MOB: +966 59 141 5626, +966 54 746 9809

---

Email :

duba@glowarabiatrading.com

---

Address :

KING ABDULAZIZ IBN ABDULRAHMAN SAUD, AR RABIE DIST, YANBU, KSA